

CHP - Compact High Performance Headends

DVB-T2 Headend

- ✓ Independent tuner inputs
- ✓ Transmodulates DVB-S/S2/S2X/T/T2/C into DVB-T2
- ✓ Decryption of encrypted program packages possible via CA modules (also high-speed modules)
- ✓ Flexible and efficient mapping of programs to CA modules
- ✓ Output modulation configurable
- ✓ Remux | Crossmultiplex
- ✓ LCN sorting, PID filtering* and NIT function*
- ✓ Web-based configuration
- ✓ Suitable for AXING SMARTPortal
- ✓ Supports SNMP
- ✓ Interface for CASimulcrypt Server*
- ✓ Can be used for wall mounting or as a 19" unit

* Software extension required



Available devices:

MK 8-20 | 8 × DVB-S/S2/S2X/T/T2/C into 8 × DVB-T2

MK 8-26 | 8 × DVB-S/S2/S2X/T/T2/C into 8 × DVB-T2 | 6 × CI

Accessories:

MKS 1-01 | Software extension for PID filtering

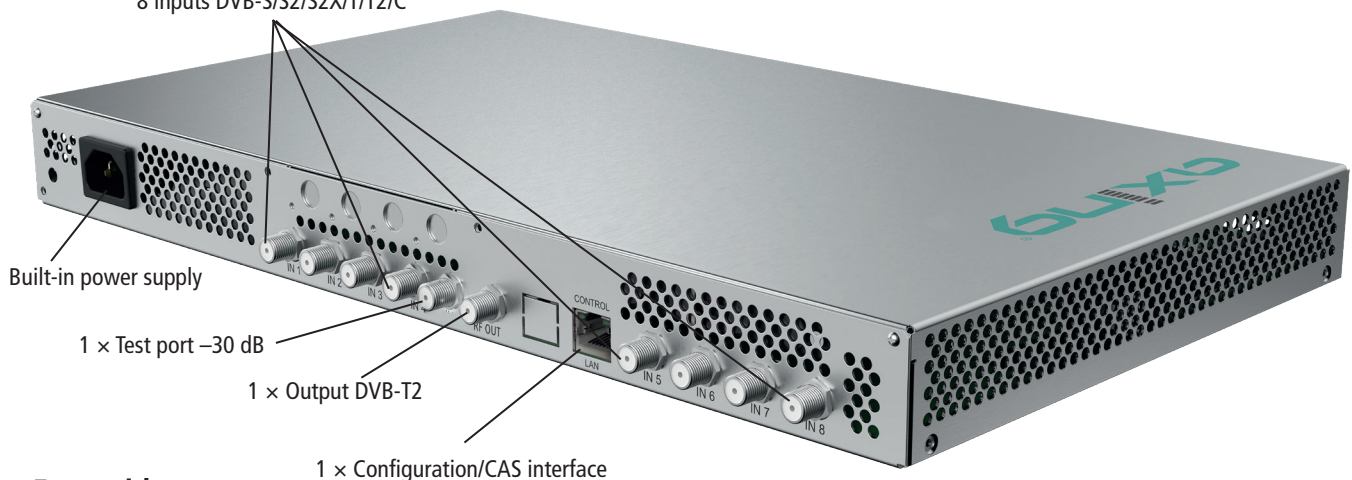
MKS 1-02 | Software extension for CASimulcrypt

MKZ 1-00 | Front panel for 19" usage of MK xx-00

MKZ 1-01 | Front panel for 19" usage of MK xx-06 | CI

Rear side

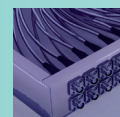
8 inputs DVB-S/S2/S2X/T/T2/C



Front side



MK 8-06 with 6 or 3 CI slots on the front for CA modules for central decryption of encrypted programme packages (high-speed CAM are supported).



AXING AG

Gewerbehaus Moskau

Phone +41 52 - 742 83 00

Fax +41 52 - 742 83 19

8262 Ramsen

info@axing.com

www.axing.com

Type	MK 8-20	MK 8-26
Inputs		
Number of tuners	8 × DVB-S/S2/S2X/T/T2/C	
Connector	8 × F-female	
Frequency range	900...2150 MHz @ DVB-S/S2/S2X 50...898 MHz @ DVB-C 50...898 MHz @ DVB-T/T2	
Channel bandwidth	6/7/8 MHz @ DVB-T/T2	
Input level	43...84 dBμV @ DVB-S/S2/S2X 49...84 dBμV @ DVB-C 39...84 dBμV @ DVB-T/T2	
LNB voltage	13/17 V; 22 kHz on/off; DiSEqC 1.0	
Max. LNB current	250 mA per input 1000 mA per device	
CI slots	-	6
Input modulation		
Type	QPSK/8PSK/8APSK/16APSK/32APSK @ DVB-S/S2/S2X QAM16, QAM32, QAM64, QAM128, QAM256 @ DVB-C QPSK, QAM16, QAM64 @ DVB-T QPSK, QAM16, QAM64, QAM256 @ DVB-T2	
Compliance	DVB-S = EN 300 421 DVB-S2 = EN 302 307-1V1.4.1 DVB-S2X = EN 302 307-2V1.1.1 DVB-C = EN 300 429/ITU-TJ.83 Annex A/C DVB-T = EN 300 744 DVB-T2 = ETSI EN 302 755	
Supported input transport streams	MPEG-2 ISO/IEC 13818 MPEG-4 ISO/IEC 14496	
Error correction	auto	
Symbol rate	1.5 ... 45 MS/s (<40MSymbol/s in 32APSK) @ DVB-S 1 ... 7.2 Mbaud @ DVB-C	
Transportstreams		
Modifiable program information	Program name, SID remapping, PID remapping, PID filtering* TSID, ONID	
Encryption	DVB-CSA*, DVB-CISSA*, ATIS-IDSA*, AES-ECB*, AES-CBC*	
Output		
Number of channels	8 × DVB-T2	
Frequency range	109 ... 862 MHz	
Channels selectable	S2...K69 @ DVB-T2	
Channel bandwidth	7/8 MHz	7/8 MHz
Possible frequency shift	-4 ... +4 MHz (0,5 MHz steps)	
Connector	1 × F-female	
Test port	-	
Impedance	75 Ω	
Output level adjustable	78 ... 98 dBμV @ DVB-T2	
Output modulation		
Compliance	DVB-T2 (EN 302 755, mode A (single PLP)) EN 50083-9 ETSI TS 101 154 ETSI EN300 429 ETSI EN 300 744	
Type	QPSK, QAM16, QAM64, QAM256	
MER	≥ 43 dB	
Bit rate, max	47.7 Mbps	
FFT	1K, 2K, 4K, 8K, 8Kext, 16K, 16Kext mode @ 8 ch. 32K, 32Kext mode @ 4 ch. only	
FEC	1/2, 3/5, 2/3, 3/4, 4/5, 5/6	
Guard interval	1/128, 1/32, 1/16, 19/256, 1/8, 19/128, 1/4	
Interfaces		
Control/CAS	1 × RJ-45	
Compliance Control/CAS	IEEE 802.3, 100 Base-T	
Supported configuration protocols	HTTP, SNMP v1, SNMP v2c, AXING SMARTPortal**	
General		
Operating voltage	100 ... 240 VAC/50 ... 60 Hz	
Power consumption	50 W	
Equipotential bonding connection	4 mm ²	
Operating temperature range (acc. to EN 60065)	-10°C...+50°C	
Dimensions (W × H × D) appr.	480 × 253 × 47 mm	
Weight	2.550 kg	2.650 kg
Comments	* with software extension only ** encrypted, cloud-based application for configuration, monitoring and remote maintenance	